

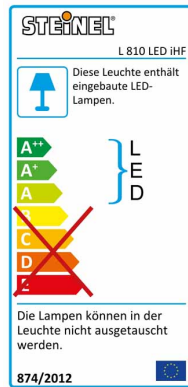
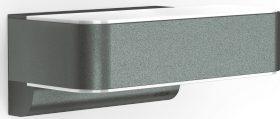


Domestic users / Lights & Floodlights / Outdoor Lights / L 810 LED iHF

## L 810 LED iHF

### Information copy

The most modern outdoor light in the world. Designer sensor-switched outdoor light L 810 LED iHF with invisible high-frequency sensor, ideal for building entrances and fronts of buildings, 12,5 W STEINEL LED lighting system, 612 lm, 160° coverage angle, reach from 1 - 5 m, for stylish up and downlighting, includes soft light start.



### Details

**12,5w**

12,5 W 612 lm

**3JAHRE  
GARANTIE**

3 years functional warranty



2 - 2000 lux



manual override



IP44



ideal 2 m

**LED**

30 years (Ø 4,5h / day)



3000K warm-white



Reichweite 1 - 5 m



soft light start



Up-/Downlight



intelligent high frequency sensor 160°



energy saving



5 sec - 15 min



Included STEINEL LED-System



Invisible high-frequency sensor



intelligent soft start function



Optional basic lighting level 10 %



High-quality aluminium



Optional manual override for 4 hours

---

### Technical specifications L 810 LED iHF Anthracite

---

**European Article Number (EAN)** 4007841009847

---

**Dimensions(w x h x d):** 88 x 230 x 145 mm

---

**Voltage** 230-240 V/50 Hz

---

**Sensor type** iHF (intelligent high-frequency technology)

---

**HF-system** 5.8 GHz

---

**Transmitter power:** approx. 1 mW

---

**Output** 12.5 W

---

**Brightness** 612 lm

---

**Efficiency** 49 lm/W

---

**Light colour** 3000 K / SDCM 3

---

**Colour rendering** Ra ≥ 80

---

**LED life expectancy** 50,000 h (L70B10 to LM80)

---

<b>LED cooling system</b>	Active and Passive Thermo Control
<b>Detection angle</b>	160° with sneak-by guard
<b>Reach</b>	1 - 5 m
<b>Time setting</b>	5 sec. - 15 min.
<b>Response brightness</b>	2-2000 lx
<b>Basic light level</b>	10%
<b>Manual override</b>	selectable, 4h
<b>Soft light start</b>	Yes
<b>Degree of protection (IP)</b>	IP44
<b>Protection class</b>	II
<b>Impact strength</b>	None
<b>Temperature range</b>	-20°C to +50°C
<b>Material</b>	Aluminium, UV-resistant plastic
<b>Lamp</b>	STEINEL LED system
<b>Version</b>	Anthracite

### Application

outdoors, ideal for building entrances and fronts of buildings.